



LCD MARINE RADAR

MR-570R



Icom Inc.

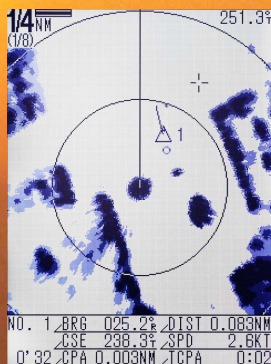
The “third eye” on your boat is bright, easy and reliable

When it is dark, rainy and foggy or objects are too far away to see, the MR-570R acts like as your “third eye”. The bright and clear LCD display and easy to operate key layout, always provides reliable information, even in critical situations. In the uncertain and unpredictable ocean, one thing you can count on is the MR-570R, will always help guide you where you want to go, safely and easily with powerful 4kW output generating observations for up to 36 nautical miles.



LCD MARINE RADAR
MR-570R

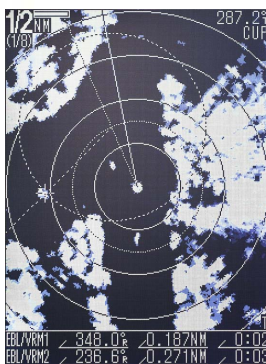
EPA function



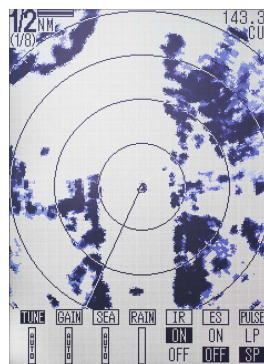
Navigation screen



Negative display



Adjusting screen



Powerful 4kW output for 36 nautical miles observations

The 60cm (2ft) radome scanner provides from 0.125 to 36 nautical miles of observation with the powerful 4kW of magnetron. The scanner antenna rotates up to 48 times in a minute. This allows an efficient screen renewal for fast moving vessels.

High-contrast 5.7" LCD display

The compact 5.7" display is convenient for pleasure boats or fast moving vessels, where space is at a premium. Set it on dashboard or hang it under the roof. Its QVGA (320x240 pixels) display clearly shows the radar echoes in 4 shades. The negative display setting lights up objects in white during night time operation.

Rugged construction and easy installation

The display unit is shielded tight to be water resistant equivalent to JIS 4 (except cables). The radome cover is made of AES resin for durability and is lightweight. It withstand the severe environment for many years. The system cables allow easy and flexible installation.

4 types of operating modes

The true motion* mode provides easy recognition of your vessel action. It fixes the surroundings and moves your position on the screen according to your real movement. Also North-up, Course-up and Heading-up are available.

* True motion requires additional bearing and position data.

2 EBL's and 2 VRM's

By having 2 EBL's (Electronic Bearing Lines) and 2 VRM's (Variable Range Markers), this allows tracking of 2 targets simultaneously. Further more, advanced measuring such as the distance and bearing between 2 targets, relative speed and course of a target, and distance and course from a waypoint are available.

● Scanner Unit



Waypoint indication

When connected to a GPS or other navigation system, which have NMEA 0183, N+1, AUX data format outputs, the waypoint indication is shown on the screen (with ship's position in Lon/Lat and distance to the point).

EPA and MOB

The EPA* (Electrical Plotting Aid) allows you to plot 10 targets and forecast the courses with these vectors on the screen. The CPA (Closest Point Approach) and TCPA (Time to Closest Point Approach) alarm gives the audible warning when the targets come close to you. In addition, the MOB* (Man Overboard) point keeps the position on the screen if a crew member falls overboard.

* EPA and MOB requires additional bearing and position data.

Power save function and standby mode

For saving battery consumption, the power save function suspends the transmission 1 to 30 minutes. In that time, the display are turned off. And standby mode setting stops the transmission and shows the navigation data on the display.

And more features

- Automatic tuning and automatic GAIN
- Rain clutter and automatic sea clutter
- Switchable pulse-width to detect a small target
- Off-center function allows you to shift the desired direction, useful for watching bow direction or coastline
- Alarm zone setting emits a beep sound when an other ship or island comes into the range or out of the range
- Interference Reduction decreases the interference from other ships
- Zoom function expands the targets two times to detect a small target
- NMEA 0183 format output to connect a video plotter or computer
- Stretch function enlarges the echo images
- Menu languages are selectable from English, Spanish, Portuguese, Chinese, and Korean as your preference



SPECIFICATIONS

GENERAL

- Minimum range : 25m (when measurement range is 1/8 NM)
- Maximum range : 36NM
- Measurement range/fixd rings :

Range (NM)	1/8	1/4	1/2	3/4	1	1.5	2	3	4	6	8	12	16	24	32	36
Ring (NM)	1/16	1/8	1/8	1/4	1/4	1/2	1/2	1	1	2	2	4	4	8	8	12

- Preheat time : 90sec.
- Connection length between display and scanner : 10m(standard), 20m(option), 30m(option)

DISPLAY UNIT

- Display type : 5.7" monochrome LCD
- Pixels : 240×320
- Power supply requirement : 10.2–42V DC (negative ground)
- Power consumption (approx.) : 47W
- Operatable temp. range : –15°C to +60°C; +5°F to +140°F
- Unit of distance : NM (nautical mile), km
- Dimensions (projections not included) : 186 (W)×203 (H)×103 (D) mm
7 5/16 (W)×8 (H)×4 1/16 (D) in
- Weight (approx.) : 2kg; 4lb 6.5oz
- Input data format : NMEA 0183 (ver. 2.0), N+1, AUX
- Output data format : NMEA 0183 (ver. 2.0)

SCANNER UNIT

- Type : 2ft slotted wave-guided array in radome
- Rotation speed : 24–48rpm typ.
- Beamwidth : Horizontal beam 4° typ.
Vertical beam 22° typ.
- Sidelobe : –18dB typ.
- Polarization : Horizontal
- Dimensions (radome) (projections not included) : 607 (d)×243 (H) mm
23 29/32 (d)×9 9/16 (H) in
- Weight (approx.) : 9kg; 19lb 13oz
- Operating temperature range : –25°C to +70°C; –13°F to +158°F
- Frequency : 9410MHz ±30MHz
- Peak output power : 4kW
- Pulse-width/Reception rate : 80nsec./2880Hz, 80nsec./2160Hz, 250nsec./2160Hz,
350nsec./2160Hz, 900nsec./720Hz
- Modulator : FET switching
- Mixer and local oscillator : Microwave integrated circuit
- Intermediate frequency : 60MHz
- IF passband width : 10MHz, 3MHz
- Tuning : Auto or manual
- Transmit/receive switching : Circulator

All stated specifications are subject to change without notice or obligation.

OPTIONS



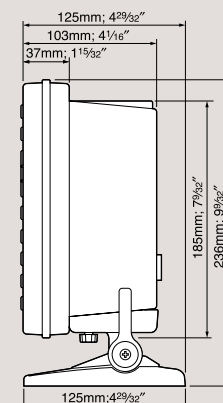
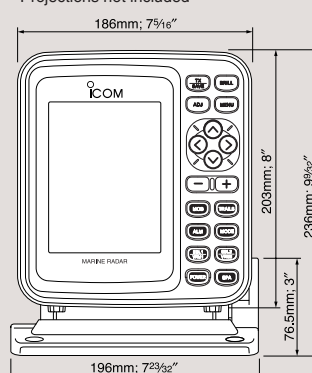
OPC-1077A SYSTEM CABLE
Allows you 20m (65.6ft) separate installation between the display unit and the scanner unit.



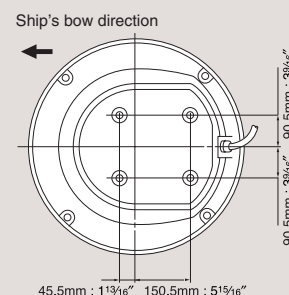
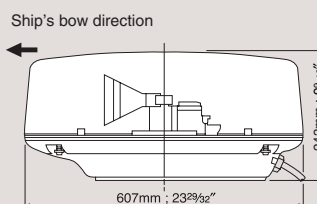
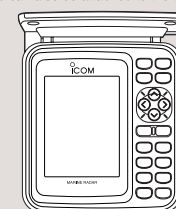
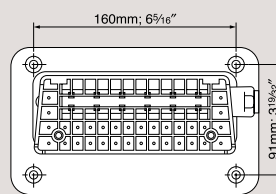
OPC-1078A SYSTEM CABLE
Allows you 30m (98.4ft) separate installation between the display unit and the scanner unit.

DIMENSIONS

*Projections not included



The stand can also be attached to the top of the unit.



* The screens use image photos in this catalog.

Icom Inc.

1-1-32, Kami-minami, Hirano-ku, Osaka 547-0003, Japan Phone: +81 (06) 6793 5302 Fax: +81 (06) 6793 0013

www.icom.co.jp/world

Count on us!

Icom America Inc.

2380 116th Avenue NE,
Bellevue, WA 98004, U.S.A.
Phone : +1 (425) 454-8155
Fax : +1 (425) 454-1509
E-mail : sales@icomamerica.com
URL : <http://www.icomamerica.com>

Icom Canada

Glenwood Centre #150-6165 Highway 17,
Delta, B.C., V4K 5B8, Canada
Phone : +1 (604) 952-4266
Fax : +1 (604) 952-0090
E-mail : info@icomcanada.com
URL : <http://www.icomcanada.com>

Icom (Australia) Pty. Ltd.

Unit 1 / 103 Garden Road,
Clayton, VIC 3168 Australia
Phone : +61 (03) 9549 7500
Fax : +61 (03) 9549 7505
E-mail : sales@icom.net.au
URL : <http://www.icom.net.au>

Icom New Zealand

146A Harris Road, East Tamaki,
Auckland, New Zealand
Phone : +64 (09) 274 4062
Fax : +64 (09) 274 4708
E-mail : inquiries@icom.co.nz
URL : <http://www.icom.co.nz>

Icom (Europe) GmbH

Communication Equipment
Auf der Krautweide 24
65812 Bad Soden am Taunus, Germany
Phone : +49 (6196) 76685-0
Fax : +49 (6196) 76685-50
E-mail : info@icom-europe.com
URL : <http://www.icom-europe.com>

Icom Spain S.L.

Ctra. Rubi, No. 88 "Edificio Can Castanyer"
Bajos A 08174, Sant Cugat del Valles,
Barcelona, Spain
Phone : +34 (93) 590 26 70
Fax : +34 (93) 589 04 46
E-mail : icom@icomspain.com
URL : <http://www.icomspain.com>

Icom (UK) Ltd.

Blacksole House, Altira Park,
Herne Bay, Kent, CT6 6GZ, U.K.
Phone : +44 (01227) 741741
Fax : +44 (01227) 741742
E-mail : info@icomuk.co.uk
URL : <http://www.icomuk.co.uk>

Icom France s.a.s.

Zac de la Plaine,
1 Rue Brindejonec des Moulinais, BP 45804,
31505 Toulouse Cedex 5, France
Phone : +33 (5) 61 36 03 03
Fax : +33 (5) 61 36 03 00
E-mail : icom@icom-france.com
URL : <http://www.icom-france.com>

Icom Polska

81-850 Sopot, ul. 3 Maja 54, Poland
Phone : +48 (58) 550 7135
Fax : +48 (58) 551 0484
E-mail : icompolka@icompolka.com.pl
URL : <http://www.icompolka.com.pl>

Asia Icom Inc.

6F No. 68, Sec. 1 Cheng-Teh Road,
Taipei, Taiwan, R.O.C.
Phone : +886 (02) 2559 1899
Fax : +886 (02) 2559 1874
E-mail : sales@asia-icom.com
URL : <http://www.asia-icom.com>

Your local distributor/dealer: